

# Daily Jefferson County Union

Locally owned since 1870 Fort Atkinson, Wis Monday August 29, 2011 Vol. 141 No. 116

## **BESPELLED! Jefferson County Literacy Council spelling bee a big s-u-c-c-e-s-s**

### **Wagner, Vogel top spellers**

By Pam Chickering Wilson Union staff writer

JEFFERSON — Four teams of spellers from across Jefferson County held out for numerous rounds during an adult spelling bee held Saturday at Rock River Gallery and Coffeehouse in Jefferson.

Two teams from the Jefferson County Literacy Council emerged in first and second place, with the duo of Eunice Wagner of Lake Mills and Allison Vogel of Jefferson winning in double overtime. Wagner, of Lake Mills, was the victor of the 1938 Jefferson Countywide Spelling Bee, and clearly she has not lost her edge, while Vogel, 24, also entered the contest with a winning record, having won her seventh-grade spelling bee around a decade ago.

The first-ever adult spelling bee proved a success, with good participation, and an enthusiastic audience. It also benefited charity, with all entrants contributing school supplies for use by families going to the Jefferson Food Pantry.

The afternoon began with a book signing by local authors Mary Lou Santovec of Jefferson and Robert Magnan of Madison, who have recently released a new book, "1001 Commonly Misspelled Words: What Your Spell Checker Won't Tell You."

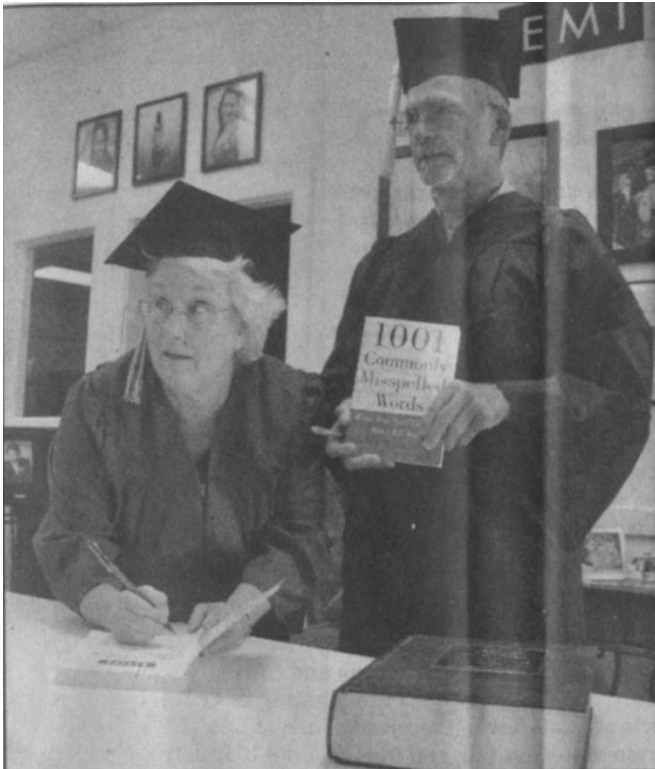
The book lists troublesome words not only according to their correct spellings, but also according to their most common misspellings, so they can be more easily found by spellers starting off on the wrong track.

Magnan, the author of "147 Practical Tips for Teaching Professors" and "Mentor in a Manual," works as a teacher, editor, and proofreader. Santovec is the author of "Wisconsin Gardens and Landscapes" and co-author of "Americana in 1/12th Scale: 50 Authentic Projects."

The authors then served as the judges for the adult spelling bee following the book signing, for which Randy Otto of Lake Mills served as interlocutor and master of ceremonies.

Members of the top three teams received medals and got to split up gift baskets that included donated items from Alterra Coffee Roasters, Rock River Gallery and Coffeehouse, and the Jefferson Area Business Center and Winter Woods.

A second annual event already is being considered.



**BESPELLED** - Rock River Gallery and Coffeehouse held an adult spelling bee Saturday, combining the event with a booksigning and a drive for school supplies for families using the Jefferson Food Pantry. Guests enjoyed refreshments set out by Ellen Waldmer, owner of Rock River Gallery and Coffeehouse.

**Shown at left signing their book. "1001 Commonly Misspelled Words," are co-authors Mary Lou Santovec of Jefferson and Robert Magnan of Madison.**

— Daily Union photos by Pam Chickering Wilson.



**The two react to comments during the proceedings**



**Two members of the "Drop Outs" team give their answer after consulting on a potential spelling.**



**Master of ceremonies Randy Otto raises the arms of the winning team, comprised of Allison Vogel, 24, of Jefferson, left, and Eunice Wagner of Lake Mills, who coincidentally won Jefferson County's 1938 countywide spelling bee**